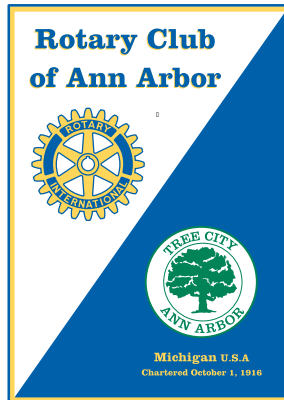


Rotary Club of Ann Arbor



Annual Report

2008 – 2009

(December 2009)

TABLE OF CONTENTS

Club President's Report	1
Club Leadership and Committees:	6
Club Membership Profile	7
Club Services Area Committee Reports:	
Program	7
Music	8
Meeting Assignments	8
Set-Up	8
Membership Committee Area Reports:	
Membership Development	8
Member Survey	9
Social Events	9
Bowling	10
Golf & Tennis Fundraiser	10
Rotary Cares	11
Publications and Communications Area Report	
Harpoon	11
Member Directory	12
Publicity and Communications	12
Website	12
Community Service Area Committee Reports:	
Community Allocations	12
Tree Planting	13
Success-by-Six	13
Rotate Your Food	14
High School Scholarships	14
STRIVE	15
Youth & Vocational Area Committee Reports:	
Junior Rotarians	15
Rotary Youth Leadership Awards [RYLA]	16
Rotary Tutors	16
Interact Clubs	16
Rotaract Club	17
Rotary Youth Exchange	18
International Service Area Committee Reports:	
Ambassadorial Scholars [Inbound]	18
Ambassadorial Scholars [Outbound]	18
International Outreach	18
International Humanitarian Projects	19
Other Major Reports	
Report of the Past President	23
Endowment Development Committee	24
Club Operating Fund	25
Ann Arbor Rotary Endowment	26
Luncheon Programs: 2008- 2009	30

CLUB PRESIDENT'S REPORT

Fellow Rotarians--

Those of us who have been given the privilege and responsibility of serving as President of the Rotary Club of Ann Arbor come away from our Presidency with a number of common themes. Among these are: "Boy, that went fast;" "Boy, did I learn a lot;" "Rotary is really a wonderful enterprise;" and "What an awesome membership we have in our Club!" And no matter how hard you work, you pass on the gavel with so much left to do.

Any person in a leadership position needs both a vision and a plan by which to navigate. For Rotary year 2008/2009, our Club had a new five year Strategic Plan. This report is my analysis of its year one implementation. The Plan's six overarching Club goals, titled **DEFINING CHARACTERISTICS**, serve as my framework and are highlighted in bold below.

- 1) WE SERVE OUR COMMUNITY: We want to communicate to the community about Rotary's work-**We are moving beyond our excellent newsletter, *Harpoon*, as our basic communication tool. We learned to use the public access channel on CTN to promote our Club and the spring PolioPlus concert. We also launched an information rich website that is accessible to our members and to the whole world. **We want to identify projects of importance to the community-** Our Community Service project portfolio continues to expand. Our newest project, Success by 6, a county-wide pre-school program which we support financially, is now implementing programs that directly involve Rotarians in active roles. Another recent project, Rotate Your Food, completed a record food collection campaign. We continue to plant lots of trees, and we support multiple local non-profits through our grants program. **We want to retain our focus on youth-**We continue our full spectrum of youth-oriented activities. We are particularly proud of our fully-energized Rotaract and Interact programs, and we are dedicated to the STRIVE scholarship program. In addition, we tutor young students in two elementary schools, support a separate high school scholarship program and send younger students to Rotary's leadership training in the spring. **We want to directly involve our members where possible-** By selecting new initiatives that require direct member participation, we are providing more opportunities for our members to be "hands on," and those who respond do so with enthusiasm. Overall, although our Youth and Community Service programs are strong, we can identify unmet needs in our community. We have started to communicate about Rotary and our Service work outside the Anderson Room

luncheon meetings; but we can, and must, do more. Our effort to involve all our members in our Service work is on track but not complete.

- 2) WE SERVE THE WORLD: We want to participate in multiple international humanitarian Projects-**We continue to sponsor, manage, and even initiate multiple international matching grant projects with Rotary clubs in developing countries, and we get approval for about four new projects annually. Through strategic partnering and the matching grant process, we leverage our \$25,000 budgets into humanitarian projects that over the years on average bring more than \$100,000 in value to the beneficiaries. **We want to promote international contacts and encourage our members to visit Rotary sites outside the US-**Our International Service programs provide many avenues for international contacts. We very much enjoy our visiting GSE teams and the Ambassadorial Scholars who study locally. Our longer term objective is to provide more opportunities for our members to visit Rotary projects in foreign sites. **We will make a substantial contribution to help Rotary complete its polio eradication program-**Our Club found multiple ways last year to lend a hand to PolioPlus, raising almost \$37,000 through the Club's and individual members' donations and through being the major partner in the spring multi-club fundraising concert. Overall, our Club has a dedicated cadre of members committed to International Service, and we are working to broaden that base. One of the best ways to do that is to give our members the opportunity to see firsthand what Rotary projects can do in developing countries for the people with the greatest needs. We got off to a great start in supporting the PolioPlus goal of meeting the requirements of the Gates Foundation matching grants.
- 3) WE INVOLVE OUR MEMBERS: We promote a welcoming ambience at our meetings-**The Club meetings have developed a good-natured ambience over the years based on the efforts of many dedicated members, and our monthly table draw to mix our seating has been well received. **We engage and educate through our programs-** Our Club is very fortunate to be able to provide excellent weekly programs that few other clubs can match. **We promote fellowship-** By working together in our committees and by sitting together at lunch, we promote fellowship. In addition, we provide multiple social events of all types to further develop our personal friendships. **We communicate about our work and encourage each member to participate-**Our meeting announcements, our newsletter and our website consistently tell members what we are doing and reinforce our message that every member should have a specific role in one or more committees. Overall, while we are an active and high achieving club, still a significant number of members are only partially engaged. The challenge is to engage each member while

recognizing that not every member will have the dedication and zeal that the leadership feels. Our effort to fully involve all our members in club activities continues.

- 4) WE SELECT OUR MEMBERS: We strive for a diverse membership reflecting the community, a town/gown balance and a portfolio of accomplished professionals and community leaders-** We have quite a diverse membership, but achieving every targeted characteristic in the makeup of our membership is an elusive goal. Our immediate focus is on restoring a larger segment of University-based members and building a broader base of members from underrepresented populations. **We strive to make both young and older members feel welcome and appreciated-** We need more young members. However, many of those we do have are active participants who have assumed leadership positions. We are proud of our new Emeritus membership status for those older members who would otherwise sever their connection with the Club and of the new Rotary Cares committee which works to assure that every member who wants to come to our meetings gets there. **We work to retain our members and recruit new ones-** We try to get all our new members into active roles as the best means of retention, and our recruitment philosophy is to attract new members by demonstrating the many accomplishments of our Club. Overall, our Club is still growing but not without tradeoffs and continuing challenges.
- 5) WE FIT IN ROTARY'S WORLD: We foster cooperative work with other local Clubs-** Our most recent example of working with other Clubs is through the monthly forum of the eight presidents of the Washtenaw County Rotary Clubs. During the 2008/09 year, the presidents decided to hold a joint fundraiser to support PolioPlus and at the same time help the smaller clubs meet their obligation to Rotary International. The "Three Men and A Tenor" concert in April in the new Skyline High auditorium was a great success in both fundraising and cooperation among local Rotarians. **We support the work of District 6380 and Rotary International and provide leadership at all levels-** A number of our past Presidents are currently serving as ADG's or participate in other District committees. Overall, we do our fair share locally and at the District level, but our members do not yet participate at the RI level. However, it seems reasonable that someone currently in our midst should one day become District Governor.
- 6) WE FUND OUR VISION: Our members will fund the programs and expenses envisioned in the new plan-** Even in these troubled economic times, our members believe in the worth of our Service work and in the necessity of our administrative expenses. Our benchmarking against other large US Rotary Clubs showed that our dues structure is one of the lowest of the reporting Clubs. **Our members will continue to contribute to The**

Ann Arbor Rotary Endowment and The Rotary Foundation- Our members continue to make generous contributions to the stream of appeals for multiple Rotary causes such as our annual golf outing to support several of our Community Service projects, solicitations for our club endowment, the annual Rotary Foundation campaign, and the increased drum beat to finish PolioPlus. In 2008/09, our members paid in, or raised in our community, just under \$250,000 for Rotary causes. **The Club will develop a long term strategy to increase the financial resources to support its service work-** We can identify many opportunities for new or expanded Service work, but this is only possible if there are more financial resources. During the year a committee began analyzing and evaluating the feasibility of and how best to obtain new resources; it will make its recommendations by the end of 2009/10. Overall, our Club has a demonstrated capacity to fund its Rotary work. It can do more if there is resolve by the leadership and a cadre of members to lead us to new heights.

The foregoing are my personal views of our Club's progress during the first year of our five-year Strategic Plan. By any measure we are well along in every major area. I truly believe we are a wonderful, high achieving Club, and we received yet another Presidential Citation from Rotary International celebrating our efforts. However, we have decisions to make to meet the remaining challenges noted above. While some of us are rightfully happy with the way things are, we need to remember that you can't stand still, you either get better or you start to slide in the other direction. I say onward and upward! Keep up the good work Rotarians. Our work is not finished.

From the bottom of my heart, thank you all for letting me be your President during the past year!

Yours in Rotary Service,


James W Cook

Looking Back at 2008 – 2009 ... Images from an Unforgettable Year!



CLUB LEADERSHIP and COMMITTEES: 2008-2009
--

OFFICERS

President	James Cook
VP/Pres-Elect	Lou Callaway
Immediate Past Pres.	Al Burdi
Secretary	Downs Herold
Club Treasurer	John Ackenhusen
Endowment Treas.	Dave Keosaian
Sgt. at Arms	Dave Williams

DIRECTORS

Wayne Colquitt
Mark Foster
Maurita Holland
Karen Kerry
Len Stenger
Scott Westerman

ENDOWMENT TRUSTEES

Bernie Bedell
Lou Callaway
James Cook (Chair)
Charlie Crone
Anne Glendon, Sec.
Dave Gunderson
Mary Hays
Norman Herbert
David Keosaian
Bob Swistock

COMMITTEE CHAIRS

Nominating	Al Burdi
Distinguished Service Award	Al Burdi
Endow. Develop.	Norman Herbert and Brooks Sitterley
Rotary Foundation	Paul Glendon and Norman Herbert
Int. Finan. Procedures	Al Burdi
Strategic Planning	Lou Callaway

Club Service

Speaker Programs	<u>Scott Westerman, Dir.</u> Mike Marich and Gloria Kerry
Set-Up	Dave Williams
Music	Larry Henkel and Ingrid Sheldon
Mtg. Assignments	Ingrid Deininger and Lois Jelnick
Audio-Visual	Dan Romanchik

Membership

Membership Devel.
Member Survey
Social
Bowling
Golf & Tennis Outing

Karen Kerry, Dir.

Agnes Reading and Tim Marshall
Sam Offen
Susan Smith Gray
Dick Elwell
Laura Lonergan

Communication

Member Directory
Harpoon
Website
Publicity/Commun.
Photography

Maurita Holland, Dir.

Cynthia Sorensen
Don Faber
Dan Romanchik
Don Faber
Fred Beutler

Community Service

Comm. Allocations
Scholarships
STRIVE
Tree Planting
Rotate-Your-Food
Success-By-Six

Mark Foster, Dir.

Bill Dunifon
Milo White
Wendy Correll and Lois Jelneck
Ian Glassford and Terry Linden
Paul Yhouse
Nishta Bhatia

Youth/Vocational

Junior Rotarians
RYLA
Rotary Tutors
Interact
Rotaract
Rotary Youth Exch.

Wayne Colquitt, Dir.

Tony Nam
Robert Albritton
Nick Lacy
Ed Wier
Huron-Karen Kerry and Ed Wier
Pioneer-Dennis Carlisle
Joanne Pierson and Audrey Schwimmer
Jim Kosteva

Int'l. Service

Ambass. Scholars (Outbound)
Ambass. Scholars (Inbound)
Int'l. Hum. Projects
International Outreach

Len Stenger, Dir.

Scott Westerman
Jim Reece
Len Stenger
Spaulding Clark and Jim Reece

CLUB MEMBERSHIP PROFILE**Report of Club Secretary - Downs Herold**

The Rotary Club of Ann Arbor was chartered in 1916 and is a large and robust organization with a rich tradition. Active membership numbered 309 at the end of Rotary Year 2008-2009. The Club also has four honorary members. There are about 50 clubs in the world that have more members, and in our area, only the Grand Rapids and Toledo clubs have larger memberships.

During 2008-2009, the Club inducted 24 new members and reinstated one former member. Fortunately no members passed away during the year, but 32 members left the Club for other reasons, including business pressures, relocation, health and nonpayment of dues.

In terms of club demographics, our youngest member is 28 years of age, while 18 (6%) are under 40 and 55 (18%) are under 50. The median Ann Arbor Rotarian is 65 years of age. Forty members (13%) of the Club are over 80 and three of these are 90 years or older. A total of 86 of our members (28%) have requested and been granted Active-Exempt status since the sum of their age and years of membership total 85 or more. Eighty (26%) of our members are women; 229 are not.

Seventy of our members (23%) have been in Rotary for fewer than three years. The median length of service in the Club is ten years. Sixty-nine of our members (22%) have been in the club for more than 20 years. Nine (3%) have over 40 years of service and our longest-serving member has been in the Club for 52 years. Although we are often known as the "Town and Gown" Club, only 56 Club members (18%) are, or were, affiliated with the University of Michigan.

Over the years, 114 members and community leaders have been honored with the Club's Distinguished Service Award with which the Club has also bestowed an honorary Paul Harris Fellowship. Five persons were so recognized in 2008-2009. A total of 129 current members (42%) have become Paul Harris Fellows through their personal contributions to The Rotary Foundation. This year, 35 members (11%) and one non-Rotarian earned Paul Harris Fellowships. Fifteen of these awardees were first-timers.

CLUB SERVICE AREAS AND COMMITTEE REPORTS**CLUB SERVICE****Director: Scott Westerman****Program Committee**

Chairs: Mike Marich and Gloria Kerry

The Program Committee is committed to offering diverse programs that are of high quality and will engage our members and guests. The committee placed emphasis on presenting balanced

programs--academic, athletic, and those of local and national interest. The Program Committee also selects programs presented by Rotary leadership which deal with Rotary International and District Programs as well as local Rotary Projects. Legacy programs such as those presented by UM's coaches, the mayor, the President of UM, and the choirs from Pioneer and Huron High Schools are popular and repeated each year. Finally, our "entrepreneur" series was initiated and consists of speakers who are involved in new business models and technologies that hopefully will grow the local economy. Programs were carefully reviewed and evaluated by the Program Committee before being added to the schedule.

Additional activities that the Program Committee engaged in during the past year were to improve our audio-visual equipment by recommending the purchase of the portable microphones to enhance the speaker question/answer period. The committee also arranged to have the committee's contact person sit at the head table to host the speaker. The committee worked on developing a plan for annual programs that is responsive to the club membership survey results.

Music Committee

Chairs: Larry Henkel and Ingrid Sheldon

Fifteen members shared their talents during the course of the year by leading and accompanying the group in song at the beginning of each meeting. Ann Arbor maintained its tradition as the "Singing Rotary Club" with these creative efforts.

Invocations, Hosts/Greeters, and Attendance Committee

Chairs: Ingrid Deininger and Lois Jelneck

One of the busiest of the club's committees, this year the committee adopted a new policy of immediately enlisting the help of newly inducted members to pair with current members in greeting attendees at the weekly luncheons. This has been well received and assists in integrating the new members into the club.

Set-Up Committee

Chair: Dave Williams

Seven active committee members and others, who offered help spontaneously, set up all 48 regular meetings and our annual Golf Outing. In addition to putting everything neatly away after the meetings, they facilitated the return of many lost, found, or misplaced items.

MEMBERSHIP

Director: Karen Kerry

Membership Development Committee

Chairs: Agnes Reading and Tim Marshall

The Membership Development Committee approached the 2008/09 Rotary Year with the goals of the new Strategic Plan very much in mind. Our primary emphasis was on early involvement

of new members in the life of the Club. In addition, we explored the use of electronic communications and virtual meetings outside of the Anderson Room.

The Committee instituted electronic nominations submitted through the Club website and rewrote parts of the Nomination form. The rewrite of the Nomination form sought to make requirements for Membership clear and to involve Sponsors and Nominees in conversation about our Club activities, projects, and expectations of Members.

The Committee strengthened its Mentoring program by following up with Mentors and by having a meeting of New Members and Mentors six weeks after Induction. This change was well received by New Members, who expressed appreciation for the Club's concern about their experiences. It also uncovered weaknesses in Orientation and let no New Member go more than eight weeks without being invited to join a committee or project.

The Committee greatly benefited by the participation of eight members who have been in the Club for two years or less. These members tested the off-site meetings of newly formed subcommittees for Orientation/Induction programming, Mentoring, and reviewed some of the Club's demographics.

Changing our Club's membership profile to better reflect the Ann Arbor community continues to elude the Committee. More targeted recruiting will be required to meet this goal, and the Club leadership will have to drive this effort.

Member Survey Committee

Chair: Sam Offen

The annual member survey polled the entire membership about its opinions and observations regarding the wide range of issues, procedures, activities and committees which are part of the Rotary Club of Ann Arbor experience. The survey used the SurveyMonkey software program and received a very high percentage of responses. Members are generally satisfied with meetings, programs and the scope of activities provided by the club. The results of the survey were presented to the Board of Directors at a meeting in June and to the membership at a luncheon meeting.

The Committee also conducted a separate survey to determine the number of tickets our Club could expect to sell for the PolioPlus Concert. This survey was executed on short notice and demonstrated the feasibility of polling the membership quickly on important issues.

Social Events Committee

Chair: Susan Smith Gray

On the first Wednesday of each Month seating at lunch was determined by lottery. Each Rotarian going through the buffet line drew a number and sat at the table designated by that number. This helped Rotarians meet all the other members!! The spring survey confirmed support for this practice.

For the third year, a series of social events was developed by the committee to provide an introduction to the many cultural (non-profit) organizations available to us, as well as to provide social opportunities for our membership to further friendships. Seven events were scheduled. They were as follows:

September – A bus trip took members to and from Comerica Park for a Tiger Baseball Game.

November – The Performance Network play, “Geoffrey and Jeffrey” was followed by a reception for Rotarians in the lobby.

December – A holiday evening at the Ann Arbor Art Center included wine and goodies as we shopped and viewed the exhibits.

January– The Kerrytown Concert House’s outstanding production of "Wine, Women, and Song" included two Rotarians in the cast. Opportunities to socialize and refreshments were provided both before the performance and during intermission.

March – The Civic Theatre performed “Stage Door” at the new Arthur Miller Theater, preceded by excellent hors d’oeuvres in the lobby.

April – The traditional Spring Fling at the Hands-On Museum featured a Strolling Supper catered by The Moveable Feast and again provided a wonderful social event. “Stoeffler” the gopher snake was there to greet guests.

May – The U of M Music School’s Senior (Student) Showcase at Lydia Mendelssohn Theater and a delicious supper at the AA home of Susan and Bob Gray closed out the year’s events.

Bowling Committee

Chair: Dick Elwell

Once again our Club had two teams in the Service Club League, which expanded to 20 teams this year, the largest the league has ever been. While neither team finished at the top of the league, we continued to bring out the best in our opponents by remembering "Service above Self." The bowling teams seem to be a club within the club, and a great deal of friendship is built up over the season. The teams continued the tradition established a few years ago of having two social outings each year with spouses. We meet at Christmas time and again in the spring when the season is over.

We look forward to having other Rotarians, especially new members, join in the fun next season. Having left room for improvement in our league standings, both teams are urgently seeking new talent.

Golf and Tennis Outing and Fundraiser Committee

Chair: Laura Lonergan

Our 2008 major fundraising event was a Golf & Tennis Outing held once again at Travis Pointe Country Club in early September. Over a hundred golfers enjoyed the links at Travis while fourteen tennis players took to the courts. One hundred and fifty-six Rotarians, spouses, sponsors and friends enjoyed a wonderful dinner and participated in the live and silent auctions. The Solicitor’s Committee, ably led by Norman Herbert, worked hard in advance of the event to obtain multiple sponsorships from both businesses and individuals. The success of

our 2008 fundraising event was impressive, especially in the face of the deteriorating local economy. Over \$67,500 (gross) and \$54,280 (net) was raised thanks to the participation and support of our members and many other local community participants.

The beneficiaries of the event were three of the Club's Community Service projects: our Tree Planting Project to replace the thousands of ash trees lost to our community because of the ash borer infestation; the Club's support for our High School Scholarship programs, including the STRIVE program, and our partnership with Washtenaw Success-By-Six, a new county-wide initiative to make sure that all our children get the necessary support in their pre-school years to be able to succeed once they reach school.

Many thanks are due to all the committee members, some of whom made numerous calls to obtain sponsorships and donations and others who worked tirelessly to plan and execute the event. Unfortunately for us, Laura Lonergan changed jobs at mid-year and moved on to another Rotary club after the event. Claire Foley and Greg Stejskal agreed to take over the committee leadership for the 2009 event.

Rotary Cares Committee

Chairs: Ingrid Deininger and Lois Jelneck

The Rotary Cares Committee was created during the 2008-2009 Rotary year to address the "care and feeding of our Rotary flock." Looking out for our more senior members and members with health issues, the Committee sends out get well cards, sympathy cards, makes calls and arranges transportation to weekly meetings for members unable to drive. Their most important function may be identifying members to be considered for Emeritus Status within our Club. Emeritus membership status is available to our most senior members based on the following criteria- eighty years of age and twenty years of Rotary service. This status is reserved for members intending to resign from the Club for health or financial reasons. The award of Emeritus membership occurs at a weekly meeting and celebrates the member's long term support of Rotary and our Club. Emeritus status does not come with any requirements for either attendance or dues. Our first Emeritus class was inducted in June.

PUBLICATIONS & COMMUNICATIONS

Director: Maurita Holland

Harpoon Committee

Chair: Don Faber; Photographer: Fred Beutler; Publishers: Nishta Bhatia, Agnes Reading

The *Harpoon*, complete with photos, meeting reports, news, events calendar, and helpful web links, evolved to a well-coordinated system involving contributions from 6-8 club members every week. The photographer corps was augmented by several volunteers and the duties expanded as the website and other publicity forms expanded.

Member Directory Committee

Chair: Cynthia Sorensen

The Member Directory Committee, as part of publishing our new directory, reviewed directories from other Rotary clubs and developed new material and features; the review also resulted in the Club's developing a New Member Handbook.

Publicity and Communications Committee

Co-Chairs: Don Faber and Maurita Holland

The Publicity and Communications committee took on a wide range of projects. It developed and produced publicity for the PolioPlus concert and also a one-page flyer that promotes the Club's contributions to the community. Several members were trained to produce television programs at the Community Television Network, where the club taped a half-hour CTN program on PolioPlus and on our Club's international activities. The program aired 14 times on CTN and was re-purposed for viewing on the Club's new website.

The Club's Archive Committee was phased out and its materials transferred to the Bentley Historical Library. A team completed the review of Rotary materials donated from members and added those appropriate to the Bentley collection. A draft policy on archiving was completed and sent to the Board; its implementation will assure orderly collection and preservation of the Club's documents and artifacts. (To view materials housed at the Library, see <http://mirlyn.lib.umich.edu> and search for "Ann Arbor Rotary Club")

Website Committee

Chairs: Dan Romanchik, succeeded by Stew Nelson

Design, prototyping and initial populating of the Club's new website was completed and the site went live on July 1, 2009. The site provides considerable functionality which will be exploited during 2009-10 and beyond; its highly-distributed input capability will permit Club committees to maintain their own current and archival spaces, and its flexible programming will draw key elements from around the site to automatically generate most of the *Harpoon*.

COMMUNITY SERVICE

Director: Mark Foster

Community Allocations Committee

Chair: Heidi Grix

More than 75 applications from local area nonprofit organizations were received for consideration in 2008-2009 for grants under the Rotary Club of Ann Arbor community allocations process. The Rotary Club continued to be supportive of community projects from organizations which specifically focus on (1) helping children of all ages grow educationally, socially, culturally, and in self-esteem (2) helping young adults learn skills required to succeed later in life (3) helping at risk children in the local area, with special concern for the latter this year. Committee members felt the weight of our communities' needs in their deliberations, and made very difficult decisions regarding what programs were funded. Allocations were not

recommended [by policy] in support of general operating expenses of applicant organizations. Committee members recused themselves from assessing applications from organizations with which they may have an affiliation. Each member assessed and ranked each application independently prior to our discussion of funding meeting. As an outcome of the hard work of dozen committee members, a total of 18 of the highly-qualified community service projects was enthusiastically recommended to, and approved by, the Board of Directors for funding at a total of \$53,000.

Tree Planting Project Committee

Chairs: Ian Glassford and Terry Linden

We planted Sugarbush Park in the fall of 2008. The ground was hard and the temperature was cold but more than 60 volunteers braved the cool weather to help plant trees. We had upwards of 30 Rotarians and another 30 students, all of whom help plant 76 trees in this beautiful Park located in North East Ann Arbor. Ultimately, the sun came out and warmed us all, and the trees were watered and mulched.

This past spring we planted in a soggy Scheffler Park located in East Central Ann Arbor. We had great weather, and we planted 50 trees. The number of trees was limited because we had to dig our own holes because weather and soil conditions prevented the City foresters from bringing their machinery into the park. A contingent of 35 hearty Rotarians and their family members, alongside a dozen high school Interactors, worked hard to dig, plant, water and mulch the trees. We had a lot of fun while helping the city restore its tree canopy.

Success-by-Six Committee

Chair: Nishta Bhatia

During the 2008-09 school year, the Rotary Club of Ann Arbor built upon its ongoing support of Washtenaw Success by 6[®]. Through meaningful financial support, club-member participation in both leadership and volunteer roles and through expanding club awareness and education the Rotary Club of Ann Arbor has significantly contributed to the growth and development of this county collaborative working to ensure that all children in Washtenaw County enter school ready to succeed.

Over the past twelve months, with the support of the Rotary Club of Ann Arbor and a number of other community partners, Washtenaw Success by 6[®] has implemented a number of programs designed to help ensure that all of our young children are ready to succeed in school. They include:

Children's Health Insurance Advocate A fulltime position through the health department provides publicly funded health insurance to uninsured children and their families and facilitates the re-enrollment of families who have lost their publicly funded insurance. The **Training of Child Care Providers** was greatly expanded through a gift from the Pfizer Foundation through the Ann Arbor Area Community Foundation. **The Parent Education and Support Network** has spent a year distributing packets to the

community and is now serving over a thousand Washtenaw County children.

Washtenaw Early On is a program for developmentally delayed children between birth and age three. **First Steps Washtenaw** has been expanded through a grant from the Ann Arbor Area Community Foundation and is now in place throughout the county. **Touch-a-Truck** is an early childhood outreach event which offered 12 trucks of various kinds for children to explore, while their parents received parenting information, outreach around preschool and school readiness, and signed up for the parent network. Rotary volunteers provided the backbone of the operation – helping to set up tents, prepare displays, support organizations and trucks, distribute materials, sign people up, and hand out balloons. The Rotarians then stayed on for the clean-up!

Rotate Your Food Committee

Chair: Paul Yhouse

In 2009, the Rotary Club of Ann Arbor again teamed up with Rotary Clubs in Dexter and Ypsilanti to collect food for our local food bank, Food Gatherers, from March 23rd to April 4th. This was a change from prior years' collections that took place in June. The Committee recruited several new participating organizations including Ann Arbor Public Schools, Edwards Brothers, GiddyUp, NSF, Toyota's Technical Center, and Whole Foods, and we also involved our U of M Rotaract Club. The project was publicized on CTN (our community cable television access channel) and on a local radio station.

All of these changes resulted in a significant increase in the number of collection boxes in the community, and we collected the equivalent of 11,600 pounds of food, a 69% increase over the 2008 collection. Although the Committee does not solicit cash donations, several participating organizations and individuals made cash gifts which were given to Food Gatherers to purchase food in bulk from the food rescue network. "Thank you" letters, signed by the Club President, were sent to all participating organizations and businesses.

High School Scholarships Committee

Chair: Milo White

The High School Scholarships Committee awarded \$25,000 to 12 deserving high school seniors from Huron High School, Pioneer High School, Father Gabriel Richard Catholic High School, the Greenhills School, Community High School and Rudolf Steiner High School. The Committee received applications submitted through counselors from the respective high schools. The Committee considered the academic records, school and community activities, letters of recommendations, essays based on the Four-Way Test and the Objectives of Rotary, and finally, and most importantly, statements of financial need. Eleven of the 12 scholarship winners (and their parents) were guests of the Club at our meetings in June. These scholarship awards are funded in part by six endowed scholarships named in honor of former Rotarians. A seventh endowed scholarship created this year to honor Anna Maria List, an exceptional Huron High Interact student who met a tragic death during her senior year.

STRIVE Committee

Chairs: Wendy Correll and Lois Jelneck

STRIVE (Students Taking Renewed Interest in the Value of Education) is an educational competition based program for students at Stone School, an alternative high school in the Ann Arbor Public School System. STRIVE students in their senior year are measured on GPA improvement, attendance of at least 90%, and compliance with a pledge not to use drugs or alcohol. STRIVE creates an atmosphere of accountability and personal success. In 2008-2009, Rotary committed \$13,000 in Scholarships to Washtenaw Community College for the STRIVE students with the most improvements and highest grade points.

Addressing a historical concern of improving scholarship utilization rates, this year the STRIVE Committee focused on increasing the quantity and quality of interactions between students and Rotarians. In December prospective mentors attended a training class at WCC. Rotary partners were assigned to STRIVE scholars in late January, and an effort was made to match students with Rotarians working in their field of interest. Subway lunches were introduced – Rotarians provided Subway sandwiches and met with 6-8 STRIVE scholars at each lunch. Discussion topics included obstacles to attending WCC, how to overcome those obstacles, career interests and associated college requirements to attain the desired career. STRIVE@Work (where students spend several hours in a local work environment) took students to the Ann Arbor Area Chamber of Commerce and to University Musical Society offices. Students spent time talking to employers and employees to see how these businesses are run. Rotarians were recruited as mentors for the STRIVE scholars, establishing very important partnerships. By tracking prior STRIVE winners and their enrollment and attendance at WCC, the Committee is happy to report increased utilization of scholarships over the prior year. In addition, three students awarded scholarships for 2009-2010 enrolled in summer classes. We attribute these improvements to stronger relationships with Rotarians. Rotary hosted the STRIVE winners at a luncheon in May. Looking ahead to 2009-2010, the Committee will maintain focus on increasing the utilization of STRIVE scholarship funds.

YOUTH & VOCATIONAL SERVICE

Director: Wayne Colquitt

Junior Rotarians Committee

Chair: Tony Nam

At fourteen of its meetings this year, our Club had the privilege of hosting outstanding students from five Ann Arbor high schools selected as Junior Rotarians. Each honoree attended two Club meetings, presented a brief biographical sketch, received orientation about the world of Rotary from a past president of our Club, was paired with two Club members acting as host and vocational advisor, and subsequently received a photo and certificate commemorating the experience. The Committee's administrative focus during the year has been to streamline the process of coordinating the selection and scheduling of the Junior Rotarians with the various

high school counselors. Some success has been achieved regarding this objective, but more work remains. A more distant objective is to set up a system to connect Junior Rotarians once they go on to college with the Rotaract Club on that campus.

Rotary Youth Leadership Awards [RYLA] Committee

Chair: Robert Albritton

The Club sponsored 10 students from Ann Arbor, 5 from Pioneer, 3 from Huron and 2 from Community High School to attend the 24rd Annual Rotary Youth Leadership Awards Conference (RYLA) at the University of Guelph, Ridgetown, Ontario, on May 8-10, 2009. The RYLA program is a mix of featured speakers, group discussions, and leadership skill-building activities.

This year's new initiative was to expand our search for perspective RYLA participants. At Pioneer through the PAC program, we sponsored 3 additional students. The Pioneer Achievement Committee (PAC) is comprised of high achieving African American Male mentors (PAC Scholars) and staff members. The program identifies African American males (GPA 2.8 or above) who demonstrate certain qualities and excel academically to become mentors for underachieving African American male underclassmen. The mentors and mentees meet weekly to explore how together they can break the pattern of school failure and guide the underclassman to success in school.

The Committee hopes to include students from the STRIVE program in RYLA in the immediate future.

Rotary Tutors Committee

Chair: Nick Lacy

The Committee provides tutors at both the Angell and Burns Park Elementary Schools to work one-on-one with students identified by the teachers as needing extra help. Twenty-one Rotarians and their spouses were Rotary Reading and Math tutors. Our Club continued the tradition of giving kindergarten students at Angell and Burns Park a copy of the book, "M is for Mitten." This alphabet book, featuring Michigan sites, was given to over 150 students. Because the club had extra books this year, we donated them to students at Ann Arbor Open. All agree that the gift book is a positive reinforcement of the year's lessons.

Interact Clubs Committee

Chair: Ed Wier

Both the Huron Interact Club and the Pioneer Interact Club had very successful years. Both clubs continue to build their memberships and remain active in serving our community. The Pioneer and Huron Interact Clubs volunteered at a variety of local agencies and non-profits including the Ronald McDonald House, Neighborhood Senior Services, Food Gatherers, Wild Swan Theater, Salvation Army, the Hands-on-Museum, and of course they assisted Rotary with our Tree Planting project. The Pioneer Interact Club has now built up its leadership board so that all school classes (not just seniors) are represented on the Board. Huron Interact had previously established underclass representation among its Board members. Another

significant accomplishment this past year was the establishment of bank accounts for both Interact Clubs.

Major projects for the Pioneer Interact Club included two significant fundraising events. In the fall they hosted a barbeque event (complete with guest Rotarian grillers) at the Mongolian Barbeque restaurant to raise funds for the Rotary International Polio Eradication Campaign. In the Spring Pioneer Interact hosted a student fundraiser at Whirlyball of Ann Arbor and raised money that was donated to Troy Rotary and supported the Troy Rotary Water Filter Project. A major project for the Huron Interact Club was "The Mitten Project." For this project students gathered to knit hats, scarves, and mittens after school over several weeks, and then donated the items at the Delonis Center in Ann Arbor. Huron Interact also organized the first ever Student Leadership Conference. Similar to a one-day RYLA event, the students participated in a variety of leadership workshops (many led by Rotary volunteers), brain-stormed future Interact Club project ideas, and then concluded the day in community service by cleaning up the Huron parking lots and grounds.

Rotaract Club Committee

Chairs: Joanne Marttila Pierson and Audrey Schwimmer

Completing its fifth year, the UM Rotaract Club continues to make significant gains in strengthening its leadership, expanding the club's membership, and developing and solidifying its programs. The 2008-09 year leadership concentrated on cementing relationships within the organization and developing meaningful local service programs. As a result the Rotaractors now have a dynamic set of individuals as officers and directors for the upcoming year.

The Rotaract Club created a new program, the Ypsilanti Health Initiative, which includes health education, exercise, and support for healthy habits such as careful grocery shopping for lower income families. The Initiative includes appropriate training of student participants and thoughtful outreach in the community while drawing on the expertise of the U-M faculty in health, program delivery, and program evaluation. This program won recognition from UM Provost Teresa Sullivan along with a \$3,000 statewide Michigan Campus Compact Grant. Other local projects included "Crafts" with 100 second graders and the Haisley elementary school "Stop the Bullying" program, a weekly intervention to interact with school children on the playground and help teach them civility. In addition, the young Rotaractors assisted our members with the fall and spring tree planting in Ann Arbor city parks. Rotaractors focused what would have typically been their International efforts on a home based project, sending seven students to New Orleans to help build houses in a Katrina Relief program. Also the Rotaractors hosted the Evanston, Illinois Club in Ann Arbor and traveled to Toronto to visit the Rotaract Club there.

The 5th annual Rotaract Club bowling fundraising event raised more funds than ever before and was great fun for both the Rotaractors and Rotarians. Professional Development activities were continued at the general meetings with presentations by our Rotary Club members. The new Mentor and Mentee program was kicked off which pair's students with Rotarians of similar interests; and met with great interest from the Rotaractors.

Rotary Youth Exchange Committee

Chair: Jim Kosteva

While the RYE committee was at work in 2008-2009, there were no full year or short term youth exchanges during the year. The committee continued to reach out to area high school counselors in a timely manner to make them aware of the opportunities provided by Rotary Youth Exchange.

INTERNATIONAL SERVICE**Director: Len Stenger****Ambassadorial Scholars (Inbound) Committee**

Chair: Jim Reece

The club hosted four inbound scholars. Three were from South Korea and the fourth from Japan. Two were hosted by the Readings, and one each by the Dunifons and Reces. Two were graduate students at the College of Engineering, one at The Ross School of Business, and one at the Ford School of Public Policy. The Ford School woman met one of the Engineering male students at a South Korean outbound scholars meeting; and after a whirlwind courtship, they had gotten married by the time they arrived here. Along with two other scholars from nearby clubs, our scholars made excellent presentations as the luncheon guest speakers on April 1.

Ambassadorial Scholars (Outbound) Committee

Chair: Scott Westerman

The committee received twenty email inquiries about the Ambassadorial Scholarship program. Each was answered with a mailed brochure describing the opportunity and follow-up emails when questions were raised. In addition, a first-time opportunity to present the program at the UM's International Overseas Opportunity Office provided another source of information for students. (That presentation was video-taped to be shown later to "walk-in" students.) Several requests for the application form were received, but no completed application was submitted, although two students reported that they had chosen instead to apply through their local Rotary clubs. The good news is that both of those students were chosen by the District 6380 Selection Committee, and these recommendations were forwarded to the Rotary Foundation to finalize the award. The chair of the District committee confirmed that the successful applicants reported that they had learned about the opportunity through our Club.

International Outreach Committee

Spaulding Clark, Chair; Jim Reece Co-Chair

The Australian Group Study Exchange (GSE) team visit was a great success even though the Committee has made several suggestions to improve the logistics and arrangements for future visits. Feedback from the GSE team members themselves was deemed important, and their suggestions have been forwarded to the Assistant District Governors. The Committee hopes that all these comments can be addressed.

The hosting of the GSE visitors began with cocktails and a light dinner at Bill and Marg Dunifon's home. During the first day our Club hosted the team, its members toured the U of M central campus, the U of M Art Museum thanks to Jeannine Buchanan and the U of M athletic campus and facilities. Unfortunately, rain cancelled the planned baseball game with Notre Dame that evening, but solace was found at Grizzly Peak. The next day they toured the Hands on Museum and the Michigan Theater, followed by our Club meeting during which the visitors gave a great presentation about their homeland. Their final day with us was filled with vocational events and in the afternoon the team members scheduled their own events, followed by the PolioPlus concert that evening.

A proposed District-to-District Friendship Exchange with District 2440 in Turkey is in the planning stages, and dates have been scheduled. Our District's outgoing team's dates are from April 18, 2010 to May 2, 2010, and the incoming team's dates are from June 13, 2010 to June 27, 2010. The Committee has also received correspondence from the Lindesberg Sweden Club expressing an interest in establishing a relationship with our Club, and that opportunity is being pursued.

One of the Committee's goals is to provide opportunities to the Club's members to participate in international service projects outside the United States. Our members have been involved in continuing discussions about the possibility of doing this through one of our Club's own International Humanitarian projects. In addition, we have found that there are a great many individuals within our District who are involved in projects outside the country in which we might also participate. This work is ongoing.

In new business, Phil Alexander has been advised that the District would like him to prepare a special display for the Ambassador of Goodwill Awards. The display will be used at the next annual district conference, with the possibility and likelihood that it may eventually reach the national conference level.

Looking ahead, planning is underway for the District to District Friendship Exchange. In addition, the Committee continues to explore possible Sister Club relationships, seeks opportunities for travel to international service projects, and hopes to implement improvements to the District's process of hosting visiting GSE teams.

International Humanitarian Projects Committee

Chair: Len Stenger

The committee had another productive year. For the 2008 – 2009 year, the Club allocated a budget of \$25,000 for International Projects which allowed us to initiate three new projects. In addition, we completed activity on five projects and continued activity on one project all initiated in previous fiscal years. Due to the economic conditions, The Rotary Foundation, which normally matches our Club's and our District's contributions to our projects, reduced its budget during this reporting period. This had the consequence of limiting the number of projects which they could fund. Thus part of our Budget (sufficient for one additional project which just missed being funded) remained unspent at the end of the year. The Club Board allowed us to carry over the budget for this fourth project into FY 2009 – 2010. This project was ready for submission to The Rotary Foundation as the new fiscal year began.

Below are descriptions of the projects and activities that the committee worked on during the year.

Active New Projects This Fiscal Year

Brazil – The Adolescent Citizen Project – 2008 - 2009

Description – This project is aimed at extending an existing program by providing free education in informatics and bakery expertise to children aged 14 -18 years. Rotary funds were used to purchase bakery equipment and computers for the existing school. This is part of a larger program of ~\$80,000 with a local government agency providing \$56,000 to be used for facility construction and maintenance. Project cost: \$26,263, AA Club contribution \$6,713. Status: Project completed/closed.



India - Surgery for Senior Citizens Project - 2008 – 2009

Description - This project is aimed at providing treatment for Eye Sight, Prostate and Kidney Stones for elderly poor residents of the region near Pune, India. The goal is to perform over 430 surgical procedures. Our contact in India, Dr. Saxena reported that the project is up and running with the following already completed: 37 Corneal transplants, 31 Interocular lens procedures, two Prostate surgeries and five Lithotripsy procedures. This project is being done with our Sister Club, The Rotary Club of Pune Central, in India. Project cost: \$22,500, AA Club contribution \$6,000. Status: Approved and under implementation.

Mexico – Adopt Disadvantaged Villages Project – Phase II – 2008 -2009

Description - This project provides a water collection system including piping, water storage and possibly filtering for the community of Los Torres which is 45 minutes from San Miguel de Allende (SMA). Villages in the area of San Miguel de Allende have a shortage of potable water and because of geologic conditions; the water has unacceptable levels of fluorine. This project was begun as a non-Foundation, non-District matched project (with Board approval) in order to begin the work after the Foundation stopped accepting Matching Grant Applications. Project cost: \$20,700, AA Club contribution \$6,000. Status: Under implementation.



Active Projects From Previous Fiscal Years

Brazil - Educational Supplies -2006 – 2007

Description: – This project is to supply books, computers, and other educational materials to CPETE Technical School and Pastoral do Menor children's and adolescent program in the Santarem area of Brazil on the Amazon. Project cost: \$14,900, AA Club Contribution \$6,550. Status: Complete/closed.



Brazil – Health Equipment for Santarem – 2006 – 2007

Description - The purpose of this grant is to improve the capacity of the health system in the Tapajós region of Brazil by supplying five x-ray units and three ultrasound units for several locations along with equipment for eight complete dental clinics and two vehicles for medical outreach. This project is a Rotary Health Hunger and Humanity (3H) Project which was sponsored and led by the Ann Arbor North Club. Project cost \$330,000, AA Club Contribution \$1,000. Status: Almost complete.



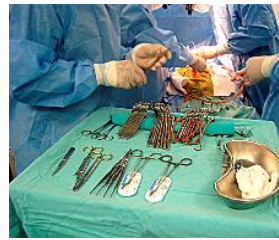
Philippines – West Bay Library Project – 2007 - 2008

Description - This approved project is aimed at the educational needs of the Lingap Orphanage (a previous project) and the greater Toledo City community by establishing a Library. Purchase of books and multimedia, electronic equipment, and furniture are part of the scope. Project cost: \$25,000, AA contribution \$9,750, additional external contributions \$2,250. Status: Complete/closed.



Guatemala – Pediatric Cardiac Clinic – 2007 - 2008

Description - This project is aimed at supplying medical surgical instruments for a pediatric clinic in Guatemala. Project cost: Project cost \$17,000, AA Club Contribution \$6,937.50. Our Sister Club, the Rotary Club of Pune Central, in India, contributed funds to this project. Status: Complete/closed.



Sri Lanka – Irrigation Tank Project – 2007 - 2008

Description - This project is to rehabilitate an irrigation tank in a remote agricultural region of Sri Lanka. Project cost: \$12,250, AA Club Contribution \$2,875. Status: Complete/closed.



Projects in Development

The following projects were under consideration for funding in FY 2009 – 2010 at the end of FY 2008 - 2009

Brazil - Adolescent Citizens Project II – This project is aimed at extending the original Adolescent Citizens Project (above) to provide equipment for training in industrial sewing, to provide capability for infometrics training and to provide multimedia equipment for the school to assist with training. This project will be funded with FY2008-2009 budget carryover.

Mexico - Adopt Disadvantaged Villages Project III– This project is intended to complete the construction of rain water collection and storage facilities for the village Los Torres near San Miguel Allende. This is a continuation of the project of the same name above.

Sri Lanka – Limb Project - This project is an ongoing effort and additional funds will provide below the knee artificial limbs and above the knee artificial joints in the area of Kandy in Sri Lanka.

Philippines – Computer Education Project - This is a project aimed at training 66 indigent high school students and 66 public school teachers in the municipality of Calauag with basic computer skills.

India – Medical Dispensary - This is a project to start a Charitable Dispensary for the benefit of local poorer workers. They have lined up a women doctor who would assist the project. Our partner in this project is the Rotary Club of Bangalore Midtown, one of our sister clubs.

Publicity

Under the leadership of Fred Beutler, we have been able to place a number of informational articles in the Harpoon and in the District 6380 newsletter publicizing our project results.

OTHER MAJOR CLUB REPORTS

Report of the Past President

Al Burdi

The responsibilities of immediate past-presidents include chairing the Nominating Committee, the Distinguished Service Award Committee, and the Internal Financial Procedures Committee as well as producing the Annual Report covering their presidential year.

The Nominating Committee consisted of Past-President Al Burdi, Lou Callaway, Jim Cook, Barbara Debrodt, Downs Herold, Mary Steffek-Blaske, and Peter Wright. Following a thorough review and discussion of Rotary and Club descriptions of responsibilities for each office to be filled for the year 2008-2009, a preliminary candidate slate was developed and first presented to the membership two weeks prior to the Club's Annual Assembly for the purposes of soliciting additional candidates. In that no additional names were forthcoming, the following slate was presented to the membership at the annual Club Assembly, November 5, 2008. The following slate was unanimously and enthusiastically approved by voice vote: President-Elect Nominee – Beth Fitzsimmons; Directors [2009-2011] – Bill Dunifon, Joanne Pierson, and Jim Reece; Club Treasurer – John Ackenhusen; and Club Secretary – Downs Herold.

The Distinguished Service Award Committee consisted of Past-President Al Burdi and former DSA honorees Dan Balbach, Ingrid Deininger, Terry Foster, and Burt Voss. As an essential first step, the committee thoughtfully shared and came to agreement on the parameters to be used in assessing those members who were seen to have demonstrated, in the full spirit of Rotary's "Service Above Self", a sterling record of continuous service to the Club, Rotary, the community, and to their profession and family. The DSA committee proudly identified the following club members who received the Distinguished Service Award and accompanying Honorary Paul Harris Fellowship honors in 2008-2009: John Ackenhusen, Paul Glendon, Norman Herbert, Libby Hines, and Sang Nam.

The Internal Financial Procedures Committee, a permanent committee established by Board resolution and implemented during the 2006-2007 fiscal year, consisted of Past-President Al Burdi, Claire Foley, Peter Richards, and the newly re-appointed Norman Herbert. The Committee worked regularly and cooperatively with Club Treasurer John Ackenhusen and Endowment Treasurer Dave Keosaian and was greatly assisted by Club Administrator John White. Working in accordance with the IFPC policies and procedures, all current checking accounts and check documentation with required dual signatures were reviewed; and there was a timely reconciliation of University of Michigan accounts. In addition, IFPC members were pleased to offer their guidance to the leadership of our Pioneer and Huron Interact Clubs on establishing new Interact policies and procedures on the independent management of newly established Interact bank accounts. The Club can feel reassured that its funds are being managed prudently and responsibly.

The 2007-2008 Club Annual Report was produced and subsequently distributed [electronically and in print] to the Club at its annual Club Assembly on December 5, 2008.

Endowment Development Committee

Co-Chairs: Norman Herbert and Brooks Sitterley

In reviewing the goals for the 2008-13 Strategic Plan of the Club, the Committee reaffirmed its commitment to provide education and promote growth of the Club's Endowment Fund. Gifts are to be encouraged through the annual giving program, bequests and memorial gifts. A goal of at least five new annual bequest commitments was adopted, and the Club is to provide greater recognition for member contributions at one or more of the noon luncheon programs. The recognition is also intended to promote the Rotary Legacy Wheel, for every \$5,000 of cumulative giving, the Rotary member would "earn" a spoke of the Rotary Wheel; five spokes would correspond to \$25,000 of cumulative giving to the Ann Arbor Rotary Endowment Fund.

As part of the new Strategic Plan adopted in June 2008, an objective was adopted to increase the annual distribution from the Endowment to the \$100,000 per year level by the plan's fifth year. Based on current policies, this will require a prior 12 quarter average market valuation of \$2,350,000 to achieve the desired distribution. Given the market's poor performance over the past Rotary year, it would seem likely that this objective will need to be reassessed.

CLUB OPERATING FUND
John Ackenhusen, Club Treasurer

Larger-than-budgeted expenses resulted from board decisions to 1) build new Club website; 2) participate in Large Rotary Club Conference, 3) purchase new audio visual equipment, and 4) pay a fee for use of room for monthly Rotary Board meetings.

	2008 - 09 Budget	2008 - 09 Actual	2007- 08 Actual
INCOME			
Interest Earnings	2,150	550	1,853
Dues	73,135	71,795	72,566
New Member Fees	1,035	960	1,040
Social Events	0	0	4,773
Other	0	70	0
TOTAL INCOME	\$76,320	73,375	\$74,828
EXPENSES			
RI Dues	20,160	20,256	19,685
District Dues	11,025	11,165	10,930
Union Facilities Rental	13,500	14,483	13,759
Club Administration	14,332	14,330	13,650
Administrative Supplies	4,000	4,358	3,953
Mailing Costs	175	170	168
Fidelity Bonds	120	0	0
Tax Preparation	1,460	640	730
D & O Liability Insurance	225	225	-134
Program Expenses	750	2,040	853
Luncheon Guests	3,000	1,737	2,602
Annual Report	300	285	302
Directory	425	599	426
International Conference	5,000	4,675	3,996
PETS & COTS Expense	570	405	0
District Conference	570	242	321
Board Planning Retreat	500	610	360
New Member Induction	0	0	550
Social Event Expense	500	-93	5,192
ML Annual Account Fee	0	0	0
Bank Charges	0	10	6
Miscellaneous	862	2,387	190
Website	1,600	7,729	1,431
Club Surveys	60	239	120
TOTAL EXPENSES	\$79,134	\$86,491	\$72,954
NET INCOME	-\$2,814	-\$13,116	\$1,874
ACCOUNT BALANCES - June 30, 2008			
Assets			
Cash and Cash Equivalents	\$19,498		
Total Assets		\$19,498	\$32,884
Liabilities & Net Assets			
Fund Balance	\$19,498		
Total Liabilities and Net Assets		\$19,498	\$32,884

ANN ARBOR ROTARY ENDOWMENT REPORT
Dave Keosaian, Endowment Treasurer

The Ann Arbor Rotary Endowment engaged the services of Park & Company, P.C., Certified Public Accountants to perform a review of the FY 2008-09 financial statements of the Community Service Accounts and the Permanent Endowment. Copies of this review have been widely distributed.

COMMUNITY SERVICE FUND

	2008-09	Annual Budget
INCOME		
Dues-Community Service	\$52,355.00	\$54,400.00
Donation-STRIVE	\$0.00	0.00
Donation-STRIVE dinner	\$260.00	\$460.00
Donations to Other Programs	\$3,275.76	0.00
Golf Outing - Net	\$54,930.45	\$45,000.00
Interest earnings-CS	\$2,200.42	\$1,500.00
Transfer from Permanent Fund	\$53,250.00	\$53,250.00
Other Income	\$115.20	\$0.00
Use of Fund Balance from Permanent Fund	0.00	\$11,350.00
Total Income	\$166,386.83	\$165,960.00
EXPENSE		
Community Service Grants*	\$50,000.00	\$50,000.00
Ash Tree Replacement	\$18,500.00	\$17,000.00
Scholarships	\$34,500.00	\$32,000.00
Success by Six Program	\$10,000.00	\$10,000.00
Scholarship & Program Exps.	\$1,009.00	\$1,000.00
Int'l Humanitarian Projects	\$25,000.00	\$25,000.00
Incoming Ambass. Scholars	\$0.00	\$800.00
Group Study Exchange	\$659.54	\$100.00
RYLA	\$2,885.23	\$3,000.00
Rotary Readers	\$1,999.20	\$2,100.00
Junior Rotarians	\$0.00	\$400.00
Interact	\$1,135.53	\$700.00
Rotoract	\$0.00	\$1,500.00
Rotary Youth Exchange	0.00	\$100.00
Rotate Your Food	\$870.00	\$900.00
PE-PolioPlus Donation	\$5,000.00	\$5,000.00
Total Community Service	\$151,558.50	\$149,600.00
Administrative Support	\$8,600.00	\$8,600.00
D/O Liability Insurance	\$225.00	\$325.00
Fidelity Bond Coverage	\$119.00	\$160.00
Tax return prep. & review	\$3,500.00	\$4,350.00
Bank charges	\$15.00	\$150.00
Office expense	\$13.59	\$500.00
Miscellaneous	\$789.98	\$2,275.00
Total Administrative	\$13,262.57	\$16,360.00
Total Expense	\$164,821.07	\$165,960.00
Excess Revenue/Loss	\$1,565.76	\$0.00

COMMUNITY SERVICE GRANT RECIPIENTS

Ann Arbor Symphony Orchestra	3,000
Child Care Network	3,000
Community Action Network	3,000
C.O.P.E	3,000
Corner Health Center	3,000
Family Learning Institute	3,000
Food Gatherers	2,000
Huron Trails, Great Sauk Trails, BSA	3,000
Leslie Science & Nature Center	3,000
Packard Health	3,000
Salvation Army	3,000
Summer Camp Scholarships	3,000
Washtenaw CASA	3,000
Washtenaw Camp Placement Assoc.	3,000
Washtenaw Children's Dental Clinic	3,000
Washtenaw Elementary Science Olympiad	3,000
Washtenaw Cty. American Red Cross	3,000
Wellness Community of SE Michigan	3,000
Total Community Service Grants	\$53,000
Less returned allocation from Innovative Works Academy (FY 07-08)	-3,000
Net Community Service Grants*	\$50,000

ANN ARBOR ROTARY ENDOWMENT**Permanent and Community Service Fund****Consolidated Statement of Financial Position**

	2009	2008
Assets		
Cash	\$91,210	\$60,649
Accounts Receivable	180	360
Prepaid Expenses	220	7,236
Investments	908,910	1,235,023
Total Assets	\$1,000,520	\$1,303,268
Liabilities and Net Assets		
Accrued Scholarships	\$43,940	\$36,950
Accrued Expenses – Other	1,160	1,405
Deferred revenues	7,350	8,000
Total Liabilities	\$52,450	\$46,355
Unrestricted Net Assets	906,283	1,231,913
Unrestricted, but designated	15,287	--
Total unrestricted assets	921,570	1,231,913
Temporarily restricted net assets	1,500	--
Permanently Restricted Net Assets	25,000	25,000
Total Liabilities and Net Assets	\$1,000,520	\$1,303,268

ANN ARBOR ROTARY ENDOWMENT

Permanent Fund

Beginning market value balance 7/1/08	\$1,235,023
Contributions received from Club members and other transfers	14,923
Dividends and Interest	35,159
Disbursed to Community Service Fund For community grants and scholarships	(43,319)
Investment market loss during year	(332,876)
Ending market value balance 6/30/09	\$908,910
Pledges and bequest commitments	447,500
Total Endowment	\$1,335,410

Note: Investment assets are held in an account at Charles Schwab, Inc.

Permanent Endowment Activity for 2008-09

The Endowment portfolio consists of donations from Rotarians and friends in the community. These contributions, along with investment performance, account for the market value of the portfolio being \$908,910 as of June 30, 2009 – a decrease of -26.4% from June 30, 2008.

The investments within the Permanent Endowment Fund are governed by an Investment Policy statement which was established and is periodically reviewed by the Endowment Trustees. The policy requires that the assets be invested in publicly traded, broadly diversified assets so as to obtain a total rate of return in excess of an established benchmark. This benchmark utilizes market indices that are weighted according to the Fund's target asset allocation.

Total Portfolio Performance as of June 30, 2009

Time Period	Rotary Portfolio	Market Benchmark
Quarter	18.3%	17.9%
Six months	6.9%	5.7%
One year	-23.3%	-24.2%
Three years	-6.7%	-5.9%
Five years	-0.8%	0.8%

The Permanent Endowment Fund's Spending Policy requires that it distribute 4.25% of the market value of the assets each year to the Community Service Fund based on the average market value for the preceding twelve quarters. For 2004-05, the amount was \$30,500; for 2005-06, it was \$34,950; for 2006-07, it was \$41,450; for 2007-08 it was \$47,369; for 2008-09 the amount was \$53,250; and for 2009-10 the amount will be \$51,719. The opportunity to increase our support of community service projects and scholarships is enhanced with voluntary contributions to the Endowment Fund and bequest commitments. The trustees especially appreciate those who have considered and become part of the Legacy Circle initiative. Thank you for your support of the Ann Arbor Rotary Endowment Community Service Fund.

ANN ARBOR ROTARY ENDOWMENT

Permanent Endowment Fund Contributors

Thank you to the following for their cumulative contributions toward the growth of the Ann Arbor Rotary Endowment through June 30, 2009.

\$5,000-9,999	\$10,000 – 24,999	\$25,000 and up
Herb Amster	Jack Edman	Anonymous
Daniel Balbach	Joseph Fitzsimmons	William Dobson
L. Thomas Conlin	Anne Glendon	Rolland B. Lyons
Howard Cooper	Paul Glendon	Karl Malcolm
George Cress	Richard Hadler	Frederick McOmber
Jay De Lay	John A McMillan	Robert Meyers
John Debbink	Gerald Prescott	Millard Pryor
John Dobson	John Rosemergy	Judy Dow Rumelhart
David Felbeck	Robert Tisch	Brooks Sitterley
Jerry M. Gray	Paul Ungrodt	
Frank Kennedy		
Gloria Kerry		
Adam Kozma		
Paul McCracken		
Griff McDonald		
Sang Nam		
John Oberdick		
David Schmidt		

LEGACY CIRCLE MEMBERSHIP

Scholarships – Funded

The Cornelius Tuomy Scholarship	The Russell and Minnie Hussey Scholarship
The Millard H. Pryor Scholarship	The Robert A. Meyers Scholarship – STRIVE
The William T. Dobson Scholarship	The Frederick N. McOmber Scholarship
The Karl D. Malcolm, M.D. Scholarship	The James and Betty Lester Scholarship – STRIVE

Scholarships – Bequests

The John C. Rosemergy Scholarship	The Shear Family Scholarship
The Weston Palmer Scholarship	The George T. Felbeck, Jr. Memorial Scholarship
The Larry and Mark Quimet Family Scholarship	The Robert C. Hughes Scholarship

Unrestricted – Funded

Anonymous	Rolland (Bob) Lyons	Brooks H. Sitterley
-----------	---------------------	---------------------

Unrestricted – Bequests

David G. Anderson, M.D.	Richard F. Elwell	Paul Glendon	John E. Oberdick
Neil and Marsha Bidwell	Joseph Fitzsimmons	David Gunderson	Gerald J. Prescott
Lou & Janet Callaway	Patricia M. Garcia	Norman & Debbie Herbert	
L. Thomas Conlin	Anne Glendon		

LUNCHEON PROGRAMS: 2008- 2009

July 2, 2008 (122)*

Speakers: Terry Allen & Barney Whittier,
Lakeshore Rotary Club
Topic: Rotarians Bringing Safe Water to Latin
America

July 9, 2008 (140)

Speaker: Jesse Bernstein, President, Ann Arbor
Area Chamber of Commerce
Topic: Ann Arbor's Economy – Past and
Present

July 16, 2008

Art Fairs -- No meeting

July 23, 2008 (134)

Speaker: Dave Keren, Rotary Member
Topic: Climbing Mt. Kilimanjaro

July 30, 2008 (98)

Speaker: Oran Hesterman, Founder, Fair Food
Foundation
Topic: Fair Food Foundation

August 6, 2008 (122)

Speaker: Lester Robinson, CEO, Wayne
County Airport Authority
Topic: Detroit Metropolitan Airport

August 13, 2008 (142)

Speaker: Todd Roberts, Superintendent, Ann
Arbor Public Schools
Topic: Visit to Skyline High School

August 20, 2008 (125)

Speaker: Dan Romanchik, Rotary Member
Topic: Ham Radio

August 27, 2008 (103)

Speaker: Ed Steinman, Volunteer Pilot,
Lighthawk
Topic: Environment from the Air

September 3, 2008 (151)

Speaker: Lucy Ann Lance, Asst. Mgr., Public
and Educational Access, City of Ann Arbor
Topic: Community Television Network

September 8, 2008 (154)

The 2008 Rotary Invitational Golf & Tennis
Outing Fund Raiser
Host: Jim Cook

September 17, 2008 (127)

Speakers: Cathi Duchon & Beth Fitzsimmons,
CEO & Board Member, Ann Arbor Y
Topic: Ann Arbor Y

September 24, 2008 (162)

Speaker: Grady Burnett, Head, Online Sales
and Operations
Topic: Google Adwords in Ann Arbor

October 1, 2008 (155)

Speaker: David Munson, Dean, UM College of
Engineering
Topic: Entrepreneurial Programs and Economic
Development

October 8, 2008 (147)

Speaker: Sue O'Shea, Professor, Cell &
Developmental Biology
Topic: Stem Cell Research

October 15, 2008 (135)

Speaker: Dan Long, AAPS Music Education
Consultant
Topic: History of Ann Arbor Schools Music

October 22, 2008 (124)

Speaker: Stanley Sherman, District Governor,
Rotary District 6380
Topic: Challenges & Opportunities in Rotary
Year 2008-2009

October 29, 2008 (159)

Speaker: Noam Kimmelman, President, UM
Rotaract
Topic: Rotaract Plans for 2009

November 5, 2008 (133)

Speaker: Don Devine, Member UMGASS
Topic: A Taste of Gilbert & Sullivan

November 12, 2008 (157)

Presiding: Agnes Reading, Tim Marshall, and the Sponsors of Our New Rotarians

Event: Welcome to and Induction of Our Fall Class of Ann Arbor Rotarians

November 19, 2008 (141)

Speaker: Will Hathaway, Educational Consultant

Topic: U-M's Turbulent Years

November 26, 2008 (97)

Speaker: Rob Van Der Voo, U-M Professor, Geological Sciences

Topic: The Drift of the Indian Subcontinent

December 3, 2008 (161)

Club Assembly – Rotary Club of Ann Arbor President Jim Cook and Club leadership team

December 10, 2008 (158)

Pioneer High School Choirs
Director, Kenneth Westerman

Program: 2008 Holiday Concert

December 17, 2008 (148)

Speaker: Joel Slemrod, U-M Professor of Business Economics

Topic: The Current Economic Environment

December 24, 2008

Winter Holidays - No meeting

December 31, 2008

Winter Holidays - No meeting

January 7, 2009 (171)

Speaker: John Godfrey, Associate Dean for International Education, Rackham School

Topic: Internationalizing by Degrees

January 14, 2009 (154)

Speaker: James Steward, Director, U-M Museum of Art

Topic: UMMA Reimagined

January 21, 2009 (149)

Speakers: Roger Myers & Ray Rabidoux, CEO's Presbyterian Village and Glacier Hills

Topic: Elderly Housing Needs / Trends Locally and Nationally

January 28, 2009 (133)

Speaker: John Ackenhusen, Development Business Group Director, General Dynamics

Topic: Seeing the Unseen

February 4, 2009 (144)

Speaker: Susan Martin, President, Eastern Michigan University

Topic: EMU Today

February 11, 2009 (127)

Speakers: Brad Bowersox & Ed Micklater, Great Sauk Trail Council, Boy Scouts of America

Topic: Centennial Celebration of Scouting

February 18, 2009 (137)

Speaker: Peter Brown, Associate Publisher, Automotive News Group

Topic: Why Detroit Will Never Be the Same

February 25, 2009 (117)

Speaker: Larry Whitworth, President, Washtenaw Community College

Topic: WCC – Preparing Students for a Changing World

March 4, 2009 (164)

Speaker: Mary Sue Coleman, President, University of Michigan

Topic: The State of the University

March 11, 2009 (139)

Speaker: Scott Westerman, Professor Emeritus, Eastern Michigan University

Topic: Sex, Religion, Race and Much More... AAPS 1960 through 1971

March 18, 2009 (136)

Speakers: Presidents of Washtenaw County Rotary Clubs

Topic: Cavalcade of Rotary Presidents

March 25, 2009 (147)

Presiding: Tim Marshall, and the Sponsors of Sixteen New Rotarians

Event: Welcome to and Induction of a Class of New Ann Arbor Rotarians

April 1, 2009 (148)

Speakers: Yuri Mano (Japan), Byung Soo Kim (Korea), Hyun Jung Lee (South Korea), Jin Yun (South Korea), and Tomoya Sanagawa (Japan); Ambassadorial Scholars

Topic: Ambassadorial Scholarly Adventures in Ann Arbor

April 8, 2009 (164)

Speaker: John Heifje, Mayor, City of Ann Arbor

Topic: The State of the City of Ann Arbor

April 15, 2009 (127)

Speaker: Will Minnette, Founder, P.E.T.

Topic: Personal Energy Transport

April 22, 2009 (162)

Speaker: Group Study Exchange Team from Australia

Topic: Life Down Under

April 29, 2009 (164)

Speaker: Deborah Ball, Dean, U-M School of Education

Topic: Strive Scholars Program

May 6, 2009 (142)

Speaker: Mary Sue King, Director, Michigan Prisoner Re-Entry Project

Topic: Prisoner Re-Entry

May 13, 2009 (150)

Speaker: Ellen Schulmeister, Executive Director, Shelter Association

Topic: Finding a Place Called Home

May 20, 2009 (129)

Huron High School choirs

Director, Richard Ingram

Program: Annual Spring Concert

May 27, 2009 (128)

Speaker: Gloria Brooks, President & CEO, Arbor Hospice

Topic: Sandwich Generation: Taking Care of Parents / Taking Care of Kids

June 3, 2009 (142)

Speaker: Paul Courant, University Librarian

Topic: U-M Libraries in the Google Age

June 10, 2009 (163)

Speaker: Victor Rosenberg, Rotary Member

Topic: Volunteering Abroad

June 17, 2009 (140)

Speaker: Katie Doyle, Executive Director, Ozone House

Topic: Ozone House Celebrates its 40th Anniversary

June 24, 2009 (120)

Speaker: Ed Weir, Architect

Topic: Aging in Place

*Total meeting attendance, members and guests